

**MINERAL RESOURCE ESTIMATE
FOR THE MACLEOD LAKE
PROPERTY, CHIBOUGAMAU MINING
DISTRICT, QUEBEC
PREPARED FOR WESTERN TROY
CAPITAL RESOURCES INC.**

Report for Ni 43-101

Authors:

Lionel Donald Stewart Winter

Neil Neville Gow

Date: October 10, 2005

TABLE OF CONTENTS

	PAGE
SUMMARY	1
INTRODUCTION AND TERMS OF REFERENCE	5
DISCLAIMER	6
PROPERTY DESCRIPTION AND LOCATION	6
ACCESSIBILITY, CLIMATE, LOCAL RESOURCES, INFRASTRUCTURE AND PHYSIOGRAPHY	8
HISTORY	9
GEOLOGICAL SETTING	11
Regional Geology	11
Local Geology	12
Property Geology	12
DEPOSIT TYPES	13
MINERALIZATION	14
General	14
Main Zone	14
South Zone	15
EXPLORATION	15
DRILLING	19
SAMPLING METHOD AND APPROACH	20
SAMPLE PREPARATION, ANALYSES AND SECURITY	20
DATA VERIFICATION	22
ADJACENT PROPERTIES	22
MINERAL PROCESSING AND METALLURGICAL TESTING	23
MINERAL RESOURCE AND MINERAL RESERVE ESTIMATES	23
ENVIRONMENTAL CONSIDERATIONS	25
OTHER RELEVANT DATA AND INFORMATION	25
INTERPRETATION AND CONCLUSIONS	25
RECOMMENDATIONS	25
REFERENCES	27
SIGNATURE PAGE	30

WINTERBOURNE EXPLORATIONS LTD.

CERTIFICATE OF QUALIFICATIONS.....	31
Lionel Donald Stewart Winter	31
Neil Neville Gow	33
APPENDIX 1	35
List of Wholly-Owned Claims of Western Troy Capital Resources Inc. and Claims Held Under Joint Venture With Match Capital Resources Corp.....	35
APPENDIX 2	36
Figures.....	36

LIST OF TABLES

	PAGE
Table 1 2005 Diamond Drilling, Main Zone	16
Table 2 Significant Main Zone Diamond Drill Intersections	16
Table 3 2005 Diamond Drilling, South Zone	17
Table 4 Significant South Zone Diamond Drill Intersections.....	17
Table 5 2005 Diamond Drilling, Northern Area.....	18
Table 6 Diamond Drill Hole Programs	19
Table 7 Resource Estimate, Main Zone	24
Table 8 Recommended Program.....	26

LIST OF FIGURES

IN APPENDIX 2	AFTER PAGE
Figure 1 General Location Map	36
Figure 2 Claim Location Map	36
Figure 3 Regional Geology Map	36
Figure 4 Property Geology Map.....	36
Figure 5 Geology and Drilling, Main Zone	36
Figure 6 Section 1125E (looking southwest), Main Zone.....	36
Figure 7 Geology and Drilling, South Zone	36
Figure 8 I.P. Anomalies and Drill Hole Locations, Northeast Area.....	36

SUMMARY

Winterbourne Explorations Ltd. (Winterbourne) has been retained by Western Troy Capital Resources Inc. (Western Troy) to prepare an independent technical report consistent with National Instrument 43-101, Companion Policy NI 43-101CP and Form 43-101F1, discussing the Western Troy's MacLeod Lake property. This report is being prepared for company corporate purposes.

The MacLeod Lake property is located at about 73° W and 52° 15' N. The property is in two parts, a wholly-owned group of claims in four separate claim groups (Windy 1, 2, 5 and 6) and a second claim group, the Eastmain River claims, which are contiguous with the Windy 1 claims, in which Western Troy has earned a 25% equity interest. Western Troy will manage any ongoing exploration on the Eastmain River claims.

The MacLeod Lake property is accessible by air, either by fixed wing charters or by helicopters out of Chibougamau, Québec. There are no services or infrastructure in the immediate vicinity of the property.

The MacLeod Lake property is relatively flat with some minor ridges and depressions. About 30% of the property is covered by lakes and swamps. The main vegetation is small jackpine and spruce. The climate is typical for northern Canada with low winter temperatures and moderate summer temperatures. The average snow pack in winter is about 92 cm.

Mineralization was located on the MacLeod Lake property in 1988 with the discovery of outcropping chalcopyrite-molybdenite mineralization. There was extensive exploration in the period 1988 to 1992, with limited programs in the years 1996, 1997 and 2002. In aggregate, 88 diamond drill holes were completed in that time.

WINTERBOURNE EXPLORATIONS LTD.

The MacLeod Lake property lies within the Superior Province of the North American Craton. Within that Craton, the property lies within the Eastmain Greenstone Belt. The margins of a granodiorite intrusion, informally known as the MacLeod granodiorite, appear to control chalcopyrite-molybdenite mineralization. However, mineralization is strongest in the wall rocks adjacent to the contact.

The MacLeod Lake deposit is considered to belong to the porphyry copper or porphyry copper-molybdenum models of Cox and Singer (1992).

Two separate deposits have been identified on the MacLeod Lake property. The Main Zone is a body of mineralization about 1,200 m long and up to 50 m in thickness. The body of mineralization is hosted in an antiformal structure that has been traced about 200 m down dip along the southern limb of the antiform.

The South Zone is located about 2 km south of the Main Zone. Mineralization is plunging at about 10° to the northeast and has a strike length of about 500 m. Higher-grade mineralization located to date is comparatively narrow, but is contained in a wider zone of lower-grade mineralization.

In 2005, Western Troy completed an exploration program. The work included an induced polarization (IP) survey and the completion of 24 diamond drill holes aggregating 3,089 m. This drilling included 9 holes on the Main Zone, 5 holes in the South Zone and 10 holes to test other exploration targets.

Core samples from the 2005 program were transported to Val d'Or, Québec by float plane and registered carrier. Samples were prepared in Val d'Or by ALS Chemex. The samples were analyzed for gold (Au) in Val d'Or using a fire assay with an atomic absorption spectrometry follow-up. Analyses for copper (Cu), Molybdenum (Mo) and Silver (Ag) were carried out at the ALS Chemex facility in Vancouver, BC. Western Troy maintained a quality control-quality assurance program during the exploration work.

WINTERBOURNE EXPLORATIONS LTD.

Some initial bench-scale testing was completed by the Centre de Recherches Minérales, of Sainte-Foy, Québec on Main Zone core-samples in 1990. This initial testing is considered to have been successful.

The estimate of mineral resources was carried out by Mr. L.D.S. Winter using sectional methods. Results from 56 diamond drill holes were included in the estimate. Sections are nominally 100 m apart and trend at 330°. A cut-off grade of 0.25% Cu was utilized. A specific gravity of 2.75 derived from averaging readings completed in 1990 was used. The results of the estimation are:

Indicated Mineral Resources				
Tonnes X 106	Cu%	Mo%	Au g/t	Ag g/t
23.7	0.52	0.08	0.05	4.0
Inferred Mineral Resources				
3.8	0.36	0.026	0.03	2.0

The writers of this report consider that the character of the property is of sufficient merit to justify the recommended program.

Winterbourne is recommending a two-stage program of work on the MacLeod Lake property. The objectives of the Stage 1 program are to carry out in-fill drilling in the Main Zone, to test targets in the South Zone and to complete some exploration testing on a target away from the known mineralization. It is proposed to complete some 8,000 m of diamond drilling in the Stage 1 work. Based on the 2005 program costs, the proposed Stage 1 work is expected to cost about \$250/m. This cost includes direct drilling costs of about \$140/m, fixed wing costs of about \$25/m to \$30/m and helicopter support costs of about \$60/m. Assaying and supervision charges are also included in these figures.

WINTERBOURNE EXPLORATIONS LTD.

A Stage 2 program, contingent on the results of the Stage 1 work, will comprise a scoping study to examine the requirements needed to advance the resource to development.

Item	\$
Stage 1	
1. Diamond drilling 8,000 m @ \$250/m	2,000,000
2. Report preparation	10,000
3. Contingency (10%)	200,000
<hr style="border-top: 1px dashed black;"/>	
Subtotal	2,210,000
Stage 2	
Scoping Study	30,000
<hr style="border-top: 1px dashed black;"/>	
Subtotal	30,000
<hr/>	
Total Stages 1 and 2	2,240,000

INTRODUCTION AND TERMS OF REFERENCE

Winterbourne Explorations Ltd. (Winterbourne) has been retained by Western Troy Capital Resources Inc. (Western Troy) to prepare an independent technical report consistent with National Instrument 43-101, Companion Policy NI 43-101CP and Form 43-101F1, discussing the company's MacLeod Lake property. This report is being prepared for company corporate purposes.

Mr L.D.S. Winter is a principal of Winterbourne Explorations Ltd. (Winterbourne) and has completed a number of exploration programs on the MacLeod Lake property. The most recent program of work was planned and supervised by Winter. Mr. N.N. Gow is a geologist based in Toronto with widespread experience in mineral exploration and mineral resource statements.

Winter has been involved in most of the exploration completed on the MacLeod Lake property. Reports of the previous work are available to the writers. Geological reports and maps prepared by the Ministère de l'Énergie et des Ressources, Québec are also available.

Metric units and Canadian dollars (\$) are used throughout this report, unless other units are stipulated.

The MacLeod Lake property is not considered to be a development or production property at this time. This report does not include information under Item 25 of National Instrument 43-101.

DISCLAIMER

This report has been prepared by Winterbourne for Western Troy. The information, conclusions, opinions and estimates contained herein are based on:

- Information available to Winterbourne at the time of preparation of this report.
- Assumptions, conditions and qualifications as set forth in this report.
- Data, reports, and opinions supplied by the Client and other third party sources (listed below). Winterbourne does not guarantee the accuracy of conclusions, opinions, or estimates that rely on third party sources for information that is outside the technical expertise of Winterbourne.

Winterbourne has relied on the following reports and opinions from third party sources for the following information that is outside the area of expertise of Winterbourne:

- Property information provided by Western Troy.
- Environmental compliance data and requirements supplied by Western Troy.

PROPERTY DESCRIPTION AND LOCATION

The MacLeod Lake property is located at about 73° W and 52° 15' N in the Province of Québec about 275 km northeast of Chibougamau, Québec and lies within the Chibougamau Mining Division (Figure 1). The 473-claim property is wholly owned by Western Troy subject to a 2% net smelter royalty payable on the original 54 claims (the 4620 series claims). There are no provisions for a buyback of this royalty in the agreement. A complete listing of the wholly-owned mineral claims of the MacLeod Lake

WINTERBOURNE EXPLORATIONS LTD.

property is included in Appendix 1. The claims comprise four separate claim groups that are not contiguous (Figure 2), Windy 1, 2, 5 and 6 claim groups.

The Windy 1 Claim Group lies at the corner of four Map Areas (Lac Caulincourt, Lac Cadieux, Lac Autric and Lac Lavallette), while the Windy 2 Claim Group lies entirely within Lac Cadieux Map Area. The Windy 5 Claim Group lies within the Lac Autric Map Area and Windy 6 lies mainly within the Lac Lavalette Map Area but extends into the Lac Autric Map Area.

The MacLeod Lake property has an area of 8,295 ha. None of the claims have been surveyed to date and none of the claims are patented.

Western Troy has also earned a 25% equity interest in the 65 Eastmain River claims of Match Capital Resources Corp. (Match Capital) (Figure 2). The Eastmain River claims are contiguous with the MacLeod Lake property and lie within the Lac Cadieux Map Area. The claims are listed in Appendix 1 and have an aggregate area of 3,427 ha. Under an agreement with Match Capital, Western Troy was granted the right to earn a 25% equity interest in the Eastmain River claims by making exploration expenditures on the Eastmain River claims of \$125,000 before December 31, 2005. This expenditure requirement has now been met. Future expenditures on the Eastmain River claims will be shared, with Western Troy paying 25% of any exploration expenditures and Match Capital paying 75% of any exploration expenditures. Western Troy will manage any ongoing exploration.

Western Troy has indicated that there are no known environmental liabilities associated with its property or with the Eastmain River claims. Western Troy advises that it has all necessary permits in place to continue exploration on the property.

ACCESSIBILITY, CLIMATE, LOCAL RESOURCES, INFRASTRUCTURE AND PHYSIOGRAPHY

The MacLeod Lake property may only be accessed by air at present. Fixed wing charters are available at Baie du Poste, Mistissini Lake at Temiscamie River and both fixed wing and helicopter charters are available at Chibougamau. There are a number of potential landing sites on the property. There are no services or infrastructure in the immediate vicinity of the property. The nearest town is Baie du Poste, about 200 km south of the property. The closest road is at the northeast end of Lake Albanel at the Temiscamie River, while a winter road connects the Temiscamie River to the former Eastmain Gold Mine. The Frotet Lake area, about 150 km southwest of the Lake MacLeod property, is accessed by a road from near to Chibougamau.

The MacLeod Lake property is relatively flat with minor ridges and depressions controlled by bedrock geology and glacial deposits. About 30% of the property is estimated to be covered by lakes and swamps. The Eastmain River crosses the southeastern part of the property. The property is considered to be beyond the limits of commercial timber. The major forest vegetation consists of small jackpine and spruce.

The climate in the MacLeod Lake area is typical for northern Canada. Weather data for the town of Chapais shows that January is the coldest month with an average maximum of -12°C and an average minimum of -23°C, while July is the warmest month with an average maximum of 22°C and an average minimum of 10°C. Rainfall is highest in July at 115 mm and snowfall is highest in December with 57 cm. Highest average snow cover is 92 cm in February.

HISTORY

The initial claim group of the property was staked in 1988 to cover exposures of chalcopyrite-molybdenite mineralization. The property was acquired by a predecessor company of Western Troy from the discoverers in 1988. An initial program in the fall of 1988 demonstrated that the property had the potential to host a large base metal deposit. Diamond drilling programs were completed in the summer of 1989 and programs continued each year until 1992. Comparatively small programs were carried out in 1996 and 1997, and in 2002. The most recent work on the property was completed in 2005.

The following work has been completed during the different campaigns.

1988:

- Line-cutting on the original 54 claims.
- Very low frequency method (VLF) and total field magnetic ground geophysical surveys over the gridded area at 100 m line spacing (Grant, 1989).
- Dipole-dipole induced polarization (IP) survey over known showings at 50 m line spacing (Grant, 1989).
- Sampling and geological mapping of two showings (Winter, 1988).

1989:

- Geological mapping of the original gridded area (Brack, 1989).
- Prospecting of selected areas outside the original 54-claim property (Brack, 1989).
- Soil geochemical survey of most of the 54-claim property (Pilkey, 1989).
- Diamond drilling of 930 m in 11 holes (Pilkey, 1989).
- Geological mapping at 1:1,000 scale of the area hosting known occurrences (Prior, 1989).
- Staking of an additional 50 claims.

WINTERBOURNE EXPLORATIONS LTD.

- Gradient IP survey over the original 54-claim block at 200 m line spacing, including water covered areas (Winter, 1990).

1990:

- Air photo lineament study (Brack, 1990).
- VLF, total field magnetometer and gradient magnetometer survey of the original 54-claim area (Norwin Geological Ltd., 1990).
- Diamond drilling of 6,352.5 m in 46 holes in two phases (Prior, 1990, McAuley, 1990).
- Helicopter-borne electromagnetic (EM), VLF and magnetometer survey at 125 m line spacing over the MacLeod Lake property and various Licences of Exploration (Podolsky, 1990).
- Dipole-dipole IP survey, Rooster Lake area (Gaucher and Tshimbalanga, 1990).
- Geological mapping along strike of the Main Zone at a scale of 1:2,500 (McAuley, 1990).
- Geological mapping of the property outside the original 54-claim property.
- Further geophysical surveying in the Richards Point area.
- Helicopter reconnaissance of surrounding exploration licences.

1991:

- Diamond drilling of 2,192.5 m in 15 holes.
- Further reconnaissance mapping within the exploration licences.
- Reconnaissance geological mapping, prospecting and B-horizon soil geochemical sampling of the granodiorite contact.
- Work on targets within Licence 882 (Prior, 1991b).

WINTERBOURNE EXPLORATIONS LTD.

1992:

- Line-cutting, soil sampling and IP surveys along 25 km of the granodiorite contact.
- Drilling of 2192.5 m in 15 holes on targets around the granodiorite contact.

1996:

- Drilling of 92.4 m in 1 hole testing the South Zone.

1997:

- Locating and sampling of mineralized boulders.

2002:

- Gold Summit Mines Ltd. (Gold Summit) optioned parts of the MacLeod Lake property and completed a till sampling program for kimberlite indicator minerals (KIM) (Pirie, 2003). Gold Summit located a few KIM of interest in three samples but considered the results disappointing and dropped the option.

GEOLOGICAL SETTING

REGIONAL GEOLOGY

The Archean age Superior Craton forms the core of the North American Craton. The Superior Province is a 2×10^6 km² area within the craton that is free of significant post-Archean cover rocks and deformation. The rocks of the Superior Province are of mainly Meso- and Neoproterozoic age and have been affected by post-Archean deformation only along boundaries with the Proterozoic orogens such as the Trans-Hudson and Grenville, and along major internal fault zones.

The Superior Province has traditionally been divided into structural Subprovinces. These Subprovinces trend broadly across the Superior Province in east-west belts. The MacLeod Lake property lies within one of these structural belts.

LOCAL GEOLOGY

The MacLeod Lake property is situated within the Eastmain Greenstone Belt (Figure 3). This is one of a number of narrow, discontinuous greenstone belts in the James Bay region of northern Québec (Card and Poulsen, 1998). Card and Poulsen (1998) described the greenstone belt as:

Small belts in the Eastmain River area consist of basalt overlain by agglomerate, rhyolitic tuff, basaltic flows, and clastic metasedimentary rocks (Hocq, 1976; Couture and Guha, 1990). These belts have been affected by several phases of greenschist- and amphibolite-facies metamorphism. They are enclosed and intruded by voluminous granitoid rocks including the 2728 to 2708 Ma (Gauthier, 1981) gneissic to massive Duxbury tonalite-granodiorite complex.

The main body of granodiorite, informally referred to as the MacLeod granodiorite in this report and other Western Troy reports, remains poorly mapped in a regional sense. Reconnaissance mapping by Western Troy has demonstrated that the MacLeod granodiorite extends about 20 km in an east-northeast direction and has a width of about 15 km.

PROPERTY GEOLOGY

The geology of the MacLeod Lake property is dominated by the MacLeod granodiorite (Figure 4). This intrusive is in sharp contact with surrounding biotite gneisses, and migmatitic gneisses. Part of the western margin of the MacLeod granodiorite lies within the property and extends east of the property. Within the property area, the contact is folded into a synformal structure, the Lac Lavallette synform. This structure plunges at about 10° to 060°.

In outcrop, the granodiorite is seen to generally be lineated and is typically hornblende or biotite dominant. The wall rocks are biotite gneisses and migmatitic gneisses. Diabase dykes of the Mistissini Set (Fahrig, 1986) have a northwest strike across the property. These dykes were intruded at about 2.2 to 2.0 Ga. Other dykes of the Abitibi Swarm strike northeasterly through the property area.

The MacLeod Lake area is covered with moraine and fluvio-glacial material. A minor amount of lacustrine material is also reported. The main direction of glacial transport is from northeast to southwest (S45°W). Work by the Geological Survey of Canada (GSC) southwest of the MacLeod Lake property has indicated the presence of an earlier ice movement from east to west. Work completed by Western Troy indicates that the maximum thickness of overburden encountered is of the order of 10 m to 15 m.

DEPOSIT TYPES

Mineralization located in the MacLeod Lake deposit is considered to belong to the porphyry copper (Model 17) or porphyry copper-molybdenum (model 21a) of Cox and Singer (1992). While these deposits are typically Mesozoic to Recent, it is noted that they may occur in rocks of any age. Winter (2004) related the intrusion of the MacLeod granodiorite to a failed aulacogen related to the intrusion of the Mistissini dykes.

Conceptually, this deposit is considered to be amenable to bulk mining techniques and diamond drilling density and sampling techniques were developed to reflect this type of deposit.

MINERALIZATION

GENERAL

To date, two main areas of mineralization have been identified. The most important area is the Main Zone (Figures 3, 4 and 5), while a second zone of mineralization, the South Zone has been tested. A number of other showings have been identified and some exploration has been completed on several of them.

MAIN ZONE

The Main Zone is the site of the original discovery and to date 56 diamond drill holes have been completed on the Zone (Figures 5, 6).

The Main Zone is a body of mineralization about 1,200 m long and up to 50 m in thickness. The body of mineralization is hosted in an antiformal structure and it has been traced about 200 m down dip along the south limb of the antiform. The antiform has a plunge of about -10° to 070° while the dip of the mineralization in the south limb is about 45° . Mineralization is more poorly developed in the north limb.

Mineralization is preferentially developed in chlorite-biotite schist located typically about 25 m below the lower contact of the MacLeod granodiorite. The schist is about 10 m thick and its footwall and hangingwall are various gneisses. Visually, alteration in the Main Zone area is restricted with the exception of disseminated sulphides. Silicification is associated with the Main Zone but other types of alteration, (addition of chlorite, sericite, biotite, etc.) are areally widespread and do not appear to be closely associated with mineralization.

Minerals in the Main Zone include chalcopyrite, bornite, chalcocite and molybdenite and minor amounts of pyrite and pyrrhotite. These minerals are contained in biotite gneiss and biotite-amphibole schist.

SOUTH ZONE

The South Zone is located about 2 km south of the Main Zone (Figure 7). Boulders carrying chalcopyrite-molybdenite mineralization were discovered in 1989. Following further surface definition work in 1990, diamond drill holes confirmed the presence of mineralization in 1991. Two additional holes were drilled in 1992, and one further drill hole was completed in 1996. Five diamond drill holes were completed from the ice of Rooster Lake in 2005.

The South Zone is comprised of mineralization about 500 m wide and plunges at about 10° to the northeast. The thickness of the higher grade is about 1 m to 5 m but this mineralization is contained in a wider zone of low-grade mineralization. The low-grade mineralization straddles the granodiorite-gneiss contact, while better-grade mineralization is hosted in silicified biotite-amphibolite schist.

EXPLORATION

Western Troy completed an exploration program on its MacLeod Lake property in 2005. The program included IP surveys in the South Zone area and in a 15 km² area northeast of the Main Zone. A further 3,089 m of diamond drilling was completed in 24 holes with 5 holes located in the South Zone area, 9 holes located in the Main Zone area, and 10 holes in the area northeast of the Main Zone.

Diamond drill holes completed in the Main Zone are listed in Table 1.

WINTERBOURNE EXPLORATIONS LTD.

TABLE 1 2005 DIAMOND DRILLING, MAIN ZONE

Western Troy Capital Resources Inc. MacLeod Lake Property

Hole No.	Coordinates		Azimuth (°)	Inclination (°)	Length (m)
	Easting	Northing			
ML-05-85	10+75E	1+00S	330	-50	116.0
ML-05-86	10+75E	1+00S		-90	98.0
ML-05-87	13+00E	BL 0+00	150	-55	110.0
ML-05-88	13+00E	BL 0+00		-90	59.0
ML-05-89	15+00E	BL 0+00	150	-55	98.0
ML-05-90	15+00E	BL 0+00		-90	7.0
ML-05-91	8+00E	BL 0+00	150	-50	80.0
ML-05-92	8+00E	BL 0+00		-90	80.0
ML-05-93	10+25E	0+50N	150	-75	101.0
Totals					740.0

Mineralization considered to be significant was intersected in most of these holes. Significant intersections are listed below in Table 2.

TABLE 2 SIGNIFICANT MAIN ZONE DIAMOND DRILL INTERSECTIONS

Western Troy Capital Resources Inc. MacLeod Lake Property

Hole	From (m)	To (m)	Length (m)	Cu %	Mo %	Au g/t	Ag g/t
ML-05-85	7.0	89.0	82.0	0.72	0.169	0.100	4.27
ML-05-86	7.0	75.0	68.0	0.45	0.048	0.048	3.12
ML-05-87	36.0	42.0	6.0	0.86	0.096	0.077	7.67
	66.0	74.0	8.0	0.73	0.136	0.058	1.50
ML-05-88	43.0	59.0	16.0	0.23	0.023	0.024	0.75
ML-05-91	16.0	62.0	46.0	0.48	0.045	0.039	2.30
ML-05-92	29.0	77.0	48.0	0.46	0.049	0.043	2.21
ML-05-93	26.0	55.0	29.0	0.44	0.101	0.038	3.00
	68.0	95.0	27.0	0.35	0.002	0.024	1.92

Five diamond drill holes were completed on the South Zone. Details of these holes are set out in Table 3.

TABLE 3 2005 DIAMOND DRILLING, SOUTH ZONE

Western Troy Capital Resources Inc. MacLeod Lake Property

Hole Number	Grid Location		Azimuth (°)	Inclination (°)	Length (m)
	East	North			
ML-05-80	0+25W	L15+00S		-90	101.0
ML-05-81	0+75E	L15+00S		-90	78.0
ML-05-82	0+25E	L16+00S	240	-75	89.0
ML-05-83	0+00E	L17+00S	240	-75	110.0
ML-05-84	0+65W	L21+00S	240	-75	107.0
Totals					485.0

Mineralization was intersected in most of the holes. The better intersections are included in Table 4.

TABLE 4 SIGNIFICANT SOUTH ZONE DIAMOND DRILL INTERSECTIONS

Western Troy Capital Resources Inc. MacLeod Lake Property

Hole	From (m)	To (m)	Length (m)	Cu %	Mo %	Au g/t	Ag g/t
ML-05-80	6.0	8.0	2.0	0.28	0.078	0.163	7.0
ML-05-81	31.2	33.2	2.0	0.73	0.005	0.084	13.0
ML-05-82	12.1	16.1	4.0	0.64	0.096	0.224	9.0
ML-05-83	11.6	14.0	3.4	0.07	0.134	0.010	1.0

The South Zone is partially covered by the water of Rooster Lake and the five holes drilled in this area in 2005 were all drilled from the ice of the lake to test the up-dip limit of the South Zone mineralization. These holes, together with the earlier drilling and the IP survey results, indicate a zone more than 400 m wide, with a thickness of from 2 m to 5 m, and trending north-northeast. The South Zone is considered to dip to the east at about 10°.

In the Northern Area, two holes were drilled to test a gradient IP anomaly on the baseline at 35+00mE and 42+00mE (Figure 8). No mineralization of economic

WINTERBOURNE EXPLORATIONS LTD.

significance was intersected. The remainder of the drilling in the Northern Area tested IP chargeability anomalies (Table 5). Each of the drill holes intersected propylitic alteration typical of porphyry copper mineralization. Small amounts of copper mineralization were intersected in four of the anomalies.

Preliminary lithochemical sampling of the drill core from four of the holes in the Northern Area showed background copper values of less than 5 ppm Cu in the granodiorite. Propylitically altered granodiorite in two holes produced values of 89 ppm Cu and 109 ppm Cu respectively. The altered core was also anomalous in regard to arsenic and zinc. This work is considered preliminary and is considered to indicate that the propylitic alteration may be marginal to porphyry copper-molybdenum mineralization. None of the holes in 2005 were drilled deep enough to intersect the granodiorite-gneiss contact, where mineralization might be expected to be localized. Further testing in this area is considered warranted.

TABLE 5 2005 DIAMOND DRILLING, NORTHERN AREA

Western Troy Capital Resources Inc. MacLeod Lake Property

Hole Number	UTM Coordinates (m)		Azimuth (°)	Dip (°)	Length (m)
	Easting	Northing			
ML-05-94	636637	5789436	150	-60	143.0
ML-05-95	637235	5789798	150	-60	149.0
ML-05-96	640902	5792212	330	-70	197.0
ML-05-97	640278	5792941	330	-68	254.0
ML-05-98	640189	5793134	344	-65	221.0
ML-05-99	640782	5793193	----	-90	164.0
ML-05-100	640654	5793179	090	-65	221.0
ML-05-101	639668	5792774	298	-75	138.0
ML-05-102	639126	5791800	270	-65	230.0
ML-05-103	638924	5791742	090	-65	227.0
Totals					1,944.0

WINTERBOURNE EXPLORATIONS LTD.

One of the authors of the report was involved in the planning of the 2005 program and the logging of the core. The data obtained from this program is considered to be reliable.

DRILLING

There have been a number of programs of diamond drilling on the property. The various diamond drilling programs are listed below in Table 6. The 2005 diamond drilling campaign was carried out using NQ core size while earlier diamond drilling campaigns normally used BQ sized core. The 2005 diamond drilling was carried out by Bradley Bros. Limited. Bradley Bros. Limited is considered to be a reliable drilling contracting company. Overall, very high levels of core recovery were achieved.

TABLE 6 DIAMOND DRILL HOLE PROGRAMS

Western Troy Capital Resources Inc. MacLeod Lake Property

Year	Drill Hole Numbers	Number of Holes	Depth (m)
1989	89-ML-01 to 89-ML-11	11	930.0
1990	90-ML-12 to 89-ML-35	24	3,808.0
1990	90-ML-36 to 90-ML-57	22	2,544.5
1991	91-ML-58 TO 91-ML-72	15	2,192.5
1992	92-ML-73 TO 92-ML-79 AND 92-EP-01 TO 92-EP-08	15	2,057.0
1996	96-ML-80	1	92.4
2005		24	3,089.0
Totals		112	14,713.4

There were a number of objectives in the 2005 diamond drilling. Nine holes (ML-05-85 to ML-05-93) were drilled to test and extend the Main Zone mineralization. A further five holes were designed to test the South Zone mineralization. The remaining ten holes were drilled in the Northeast Area to test six IP anomalies.

Overall, the drilling in the Main Zone was designed so that the drill holes cut the mineralization at a very steep angle (Figure 6). This is possible because the shape of the mineralization is now comparatively well known.

SAMPLING METHOD AND APPROACH

The diamond drill core for the 2005 drilling campaign was logged on site. The core was sampled on site using a hydraulic core splitter that is considered to have yielded satisfactory results. In all but a few cases, sample lengths were 2 m. This sampling length was selected to match the objectives of the campaign, to outline a bulk mineable deposit. Sampling was carried out in all areas where mineralization or alteration was noted. The core from the 2005 campaign and the previous campaigns is stored on the property.

No drilling, sampling or recovery factors have been identified that may materially impact the accuracy and reliability of the results of the program.

A list of significant sample composites is included above in the 'Exploration' section.

SAMPLE PREPARATION, ANALYSES AND SECURITY

Samples were dispatched to ALS Chemex laboratory in Val d'Or, Québec. Samples were taken by float plane to Baie du Poste and then transported overland by licensed carrier to Val d'Or.

The sample preparation protocols for the Val d'Or laboratory are:

1. Samples are dried, if required.

WINTERBOURNE EXPLORATIONS LTD.

2. Samples are crushed to 70% passing 2 mm (Tyler 10 mesh) screen.
3. A 250 g split is taken. The remaining reject is placed in a plastic bag and stored.
4. The 250 g sample is pulverized to 85% passing a 75 micron (Tyler 200 mesh) screen and then homogenized. The sample is ready for assay.

Gold assays are carried out on 30 g samples. The sample is fused using a flux of litharge, sodium carbonate, borax, silica, fluorspar and with other oxidants if required. The lead button containing the precious metal is reduced to PbO_2 and absorbed into a cupel. For Western Troy, the samples were digested in aqua regia and assayed by atomic absorption spectrometry (AAS).

Base metal and silver assays were completed using AAS in the ALS Chemex laboratory in Vancouver, BC. The procedure used, ME-AA46, is designed for ores and high-grade materials. A prepared sample (0.4 g) is digested with nitric acid for 30 minutes. After cooling, hydrochloric acid is added to produce aqua regia and the mixture is then digested for a further 30 minutes. An ionization suppressant was added because molybdenum is present in the samples. The resulting solution is diluted to volume (100 ml or 250 ml) with demineralized water, mixed and then analyzed by AAS against matrix-matched standards. The lower and upper limits of detection for ME-AA46 are:

Copper	0.01%	50%
Molybdenum	0.001%	10%
Silver	1 ppm	1,00 ppm

The authors consider that the sampling, the sample preparation protocols and the application, the sample security and the analytical procedures selected are proper for the style of mineralization.

DATA VERIFICATION

Western Troy maintained the following data verification program during the 2005 drilling campaign.

- Duplicate assays were completed on five percent of the samples.
- Half of the samples for which duplicate assays were performed were re-assayed at a second independent laboratory.
- A separate split of these samples was preserved, in case a referee sample was required.
- Blank samples were inserted at the rate of 2 samples per 100 samples.
- For every 100 m of core, a quarter of the core was submitted for a second analysis.

During the 2005 program, 320 samples were submitted for analysis. Results for six blank samples and six samples that were submitted for re-assay by quartering are available. The results of this analytical work are interpreted to indicate that reliable analyses have been obtained.

ADJACENT PROPERTIES

There are no properties adjacent to the MacLeod Lake property that are currently being explored. The Troilus Mine, operated by Inmet Mining Corporation, and located about 150 km southwest of the MacLeod Lake property, is reported to be a geologically similar deposit to the MacLeod Lake Main Zone. Data relating to the Troilus deposit are available on www.sedar.com and in published data.

The writers have been unable to verify information on adjacent properties. **This information is not necessarily indicative of mineralization on the MacLeod Lake property.**

MINERAL PROCESSING AND METALLURGICAL TESTING

Some initial bench-scale metallurgical testing was carried out by Centre de Recherches Minérales, Sainte-Foy, Québec on core samples from the Main Zone mineralization (Cotnoir and Tremblay, 1990). This work produced a copper concentrate grading 33.8% Cu with a recovery of 92.1% using flotation. Similarly, a molybdenum concentrate grading 40.8% Mo with a recovery of 85.8% was also produced. The molybdenum concentrate contained less than 2% Cu. It was also reported that the molybdenum concentrate grade could be increased to greater than 50% Mo with one or two cleaning stages. No tests to determine the recoveries of gold or silver have been completed.

MINERAL RESOURCE AND MINERAL RESERVE ESTIMATES

The Mineral Resource estimates for the MacLeod Lake property were prepared manually by Mr. L.D.S. Winter using a sectional method. Winter has wide experience in mineral exploration and resource estimation. Winter is independent of Western Troy for the purposes of National Instrument 43-101. The results of fifty six diamond drill holes were used in the preparation of the estimate. Sections are nominally 100 m apart and trend at 330°. They are centred on the Property Baseline trending 060°.

A cut-off grade of 0.25% Cu was utilized. The molybdenum content was not used in establishing the cut-off. Intersections were weighted over core length to establish the

WINTERBOURNE EXPLORATIONS LTD.

average grade for each diamond drill hole considered. The limits of mineralization were established using the average core intersections. Mineralization was projected 25 m beyond the last diamond drill hole. Typically, blocks are based on single diamond drill intersections. Where intersections are close together, blocks are based on more than one drill hole. The weighted average of the drill holes was used for the block grades in these cases.

A specific gravity of 2.75 was used. This figure was derived from specific gravity readings completed in 1990.

The estimate results are set out in Table 7. The classification of the mineral resources is based on the closeness of the drill spacing. The inferred mineral resources are based on the projection of the indicated mineral resources, on a few diamond drill holes and on the results of IP surveys which appear to demonstrate the continuity of mineralization.

TABLE 7 RESOURCE ESTIMATE, MAIN ZONE

Western Troy Capital Resources Inc. MacLeod Lake Property

Indicated Mineral Resources				
Tonnes X 10⁶	Cu%	Mo%	Au g/t	Ag g/t
23.7	0.52	0.08	0.05	4.0
Inferred Mineral Resources				
3.8	0.36	0.026	0.03	2.0

No factors have been noted to date that may materially affect the mining, milling or development of the MacLeod Lake property.

ENVIRONMENTAL CONSIDERATIONS

Western Troy has advised Winterbourne that there are no known environmental problems associated with the MacLeod Lake property or with the Eastmain River property.

OTHER RELEVANT DATA AND INFORMATION

Winterbourne has not seen any further information considered relevant to the mineral resources of the MacLeod Lake property.

INTERPRETATION AND CONCLUSIONS

Western Troy has been carrying out exploration on the MacLeod Lake property since 1988. A further program of geophysics and the diamond drilling of 24 holes was completed in 2005. At this time, 56 diamond drill holes have been completed in the Main Zone mineralization. Based on this testing, an estimate of the mineral resources for the Main Zone has been prepared. The results of this estimation are set out above in Table 7.

RECOMMENDATIONS

The writers of this report consider that the character of the property is of sufficient merit to justify the recommended program.

Winterbourne is recommending a two-stage program of work on the MacLeod Lake property. The objectives of the Stage 1 program are to carry out in-fill drilling in the Main Zone, to test targets in the South Zone and to complete some exploration testing on

WINTERBOURNE EXPLORATIONS LTD.

a target away from the known mineralization. It is proposed to complete some 8,000 m of diamond drilling in the Stage 1 work. Based on the 2005 program costs, the proposed Stage 1 work is expected to cost about \$250/m. This cost includes direct drilling costs of about \$140/m, fixed wing costs of about \$25/m to \$30/m and helicopter support costs of about \$60/m. Assaying and supervision charges are also included in these figures.

A Stage 2 program, contingent on the results of the Stage 1 work will comprise a scoping study to examine the requirements needed to advance the resource to development. The costs for the proposed program are set out in Table 8.

TABLE 8 RECOMMENDED PROGRAM

Western Troy Capital Resources Inc. MacLeod Lake Property

Item	\$
Stage 1	
1. Diamond drilling 8,000 m @ \$250/m	2,000,000
2. Report preparation	10,000
3. Contingency (10%)	200,000

Subtotal	2,210,000
Stage 2	
Scoping Study	30,000

Subtotal	30,000
Total Stages 1 and 2	2,240,000

REFERENCES

- Avramtchev, L., 1983, Catalogue Desguite Mineraux, Region de la Baie James; DPV 940, Ministère de l'Énergie et des Ressources, Quebec, 30 p 15 cartes (echelles 1:250,000).
- Beak Consultants Limited, 1991, Baseline environmental studies for the MacLeod Lake Project. Private Report for Windy Mountain Explorations Ltd.
- Card, K.D. and Poulsen, K.H., (1998), Geology and Mineral Deposits of the Superior Province of the Canadian Shield; Chapter 2 in Geology of the Precambrian Superior and Grenville Provinces and Precambrian Fossils in North America, The Geology of North America, v. C-1, pp 13-194
- Cotnoir, D. and Trembley, R., 1009, Preliminary Metallurgical Investigation on the Concentration of a Copper-Molybdenum Deposit. Project 90LP095, Centre de Recherches Minérales, Sainte Foy, Quebec, 28 p.
- Couture, J.F., 1987, Geologie de la partie occidentale de la bande volcanosedimentaire de la riviere Eastmain Superieure (rapport interimaire); Ministère de l'Énergie et des Ressources, Quebec, MB 87-51, 102 p.
- Couture, J.F. and Guha, J., 1990, Relative timing of emplacement of an Archean lode-gold deposit in an amphibolite terrain: the Eastmain River deposit, northern Quebec; Canadian Journal of Earth Science, V. 27, pp 1621-1636
- Davies, J.F., Whitehead, R.E. and Prior, G.J., 1992, Proterozoic Disseminated Cu-Mo Mineralization in the Superior Province, Northeastern Quebec. Expl. Min. Geol., V. 1, No. 3, pp 297-303.
- Eade, K.E., 1966, Fort George River and Kaniapiskau River (West Half) Map Areas, New Quebec. Geological Survey of Canada, Memoir 339, p. 84.
- Fahrig, W.F., Christie, K.W., Chown, E.H., Jones, D. and Macado, N., 1986, The Tectonic Significance of some Basic Dyke Swarms in the Canadian Superior Province with Special Reference to the Geochemistry and Paleomagnetism of the Mistissini Swarm, Quebec, Canada. Canadian Journal of Earth Science, V. 23, No. 2 pp 238-253.
- Hocq, M., 1985, Geologie de la Region des Lacs Campan et Cadieux. Ministère de l'Énergie et des Ressources, Quebec, ET 83-05, p. 178.
- Holmstead, W., 1999, Windy Mountain Zinc Project. Memorandum for Windy Mountain Explorations Ltd. p. 3.

WINTERBOURNE EXPLORATIONS LTD.

- Kharouba, N. and Holmstead, W., 1996, Exploration Program on the MacLeod Lake Property, Chibougamau Mining District, Quebec. Private Report for Windy Mountain Explorations Ltd. p. 29.
- McAuley, J.B., 1990, Report on Phase 3 Drilling at the MacLeod Lake Property. Private Report for Windy Mountain Ltd. p. 44.
- Pilkey, D.M.E., 1989, Report on the Geochemical Soil Survey, July, 1989, MacLeod Lake Property. Private Report for Windy Mountain Explorations Ltd.
- Pilkey, D.M.E., 1990, Geological Report on the MacLeod Lake Property (New Claim Block). Private Report for Windy Mountain Explorations Ltd. p. 34.
- Pilkey, D.M.E., and Clement, Y., 1990, Geochemical Soil Survey Report (June-October, 1990), MacLeod Lake Property. Private Report for Windy Mountain Explorations Ltd. p. 18.
- Pirie, J., 2003, Report on the 2002 Exploration Program at Windy Mountain Properties, Eastmain River Area in the Otish Mountains Area, Quebec. Private Report for Gold Summit Mines Ltd.
- Podolsky, G., 1990, Report on Combined Helicopter-borne Magnetic, Electromagnetic and VLF-EM Survey of the Eastmain River Area Property, Municipality of Baie James, north-central Quebec. Private Report for Windy Mountain Explorations Ltd.
- Prior, G.J., 1991, Classification of Rocks from the MacLeod Lake Property using Major Oxide Geochemistry. Private Report for Windy Mountain Explorations Ltd.
- Prior, G.J., 1991a, Report on Phase 4 Drilling at the MacLeod Lake Property (January-February, 1991). Private Report for Windy Mountain Explorations Ltd.
- Prior, G.J., 1991b, Final Report on Prospecting and Geological Mapping of the Eastmain River Licences of Exploration. Private Report for Windy Mountain Explorations Ltd. and Cochise Resources Inc.
- Thorpe, R.I., Guha, J., Franklin, J.M. and Loveridge, W.D., 1984, Use of a Superior Province Lead Isotope Framework in Interpreting Mineralization Stages in the Chibougamau District. In Chibougamau – Stratigraphy and Mineralization, CIM Special Vol. 34. pp. 496-516.
- Vancouver Petrographics Ltd., 1990, Petrographic Descriptions of 31 Specimens (from the MacLeod Lake Property). Private Report for Windy Mountain Explorations Ltd.
- Winter, L.D.S., 1988, Geological Report on the MacLeod Lake Property, Lac Autric Area (NTS 33/A), Quebec. Private Report for Windy Mountain Explorations Ltd.

WINTERBOURNE EXPLORATIONS LTD.

Winter, L.D.S., 1990, Geological Report on Licences of Exploration 881, 882 and 883, Eastmain River Area, Quebec. Private Report prepared for Cochise Resources Inc. p. 27.

Winter, L.D.S., 1990a, Drill Indicated Mineral Inventory Report #2, MacLeod Lake Property. Private Report for Windy Mountain Explorations Ltd.

Winter, L.D.S., 1992, Preliminary Report on Induced Polarization Survey, Prospecting and Diamond Drilling, Eastmain Project Area, Licences of Exploration 881 and 882, Chibougamau Mining District, Quebec, NTS 33A. Private Report for Cochise Resources Inc and Windy Mountain Explorations Ltd. Joint Venture, p. 33.

Winter, L.D.S., 2004, Technical Report on the MacLeod Lake Property, Chibougamau Mining District, Quebec. Private Report for Western Troy Capital Resources Inc.

SIGNATURE PAGE

This report titled “Mineral Resource Estimate for the MacLeod Lake Property Chibougamau Mining District, Quebec” and dated October 10, 2005 was prepared by and signed by the following authors:

(signed)

Dated at Sudbury, Ontario
October 10, 2005

Lionel Donald Stewart Winter, P.Geo.
Consultant Geologist

(signed)

Dated at Toronto, Ontario
October 10, 2005

Neil N. Gow, B.Sc.(Hons.), P.Geo.
Consulting Geologist

CERTIFICATE OF QUALIFICATIONS

LIONEL DONALD STEWART WINTER

As an author of this report entitled “Mineral Resource Estimate for the MacLeod Lake Property, Chibougamau Mining District, Quebec” prepared for Western Troy Capital Resources Inc. and dated October 10, 2005 I hereby make the following statements:

- A. My name is Lionel Donald Stewart Winter, P.Geo. I am a principal of Winterbourne Explorations Ltd. of 1901 Lasalle Blvd., Sudbury, Ontario, P3A 2A3.
- B. I have received the following geological degrees:
 - B.A.Sc. 1957 – University of Toronto, Toronto, Ontario
 - M.Sc. App. - - McGill University, Montreal, Québec.
- C. I am a Professional Geologist in the Province of Ontario and a Registered Geoscientist in the Province of British Columbia. I am also:
 - A Fellow of the Geological Association of Canada.
 - A Member of the Prospectors and Developers Association of Canada.
- D. I have worked as a geologist for 47 years since my graduation from university.
- E. I have read the definition of ‘Qualified Person’ set out in National Instrument 43-101 (“NI 43-101”) and certify that by reason of my education, affiliation with a professional association (as defined by NI 43-101) and past relevant work experience, I fulfil the requirements to be a “qualified Person” for the purposes of NI 43-101.
- F. I am responsible for the preparation of all sections of the technical report titled “Mineral Resource Estimate for the MacLeod Lake Property, Chibougamau Mining District, Quebec” relating to the MacLeod Lake property. I have visited the property numerous times and supervised the program of exploration in winter of 2005.
- G. I have supervised a number of other programs of exploration on the MacLeod Lake property. Prior to the 2005 program, my previous association with the property was in 1995.

WINTERBOURNE EXPLORATIONS LTD.

- H. I am not aware of any material fact or material change with respect to the subject matter of the Technical Report that is not reflected in the Technical Report, the omission to disclose which makes the Technical Report misleading.
- I. I am independent of the Issuer applying the tests set out in Section 1.5 of National instrument 43-101.
- J. I have read National Instrument 43-101 and Form 43-101F1, and this report has been prepared in compliance with National Instrument 43-101 and Form 43-101F.
- K. I consent to the filing of the Technical Report with any stock exchange and other regulatory authority and any publication by them for regulatory purposes, including electronic publication I the public company files on their websites accessible by the public of the Technical Report.

(signed and sealed)

Dated at Sudbury, Ontario
October 10, 2005

Lionel Donald Stewart Winter, P.Geo.
Consultant Geologist

NEIL NEVILLE GOW

As an author of this report entitled “Mineral Resource Estimate for the MacLeod Lake Property, Chibougamau Mining District, Quebec” prepared for Western Troy Capital Resources Inc. and dated October 10, 2005 I hereby make the following statements:

- A. My name is Neil Neville Gow and I am a Consulting Geologist. My office address is Suite 501, 55 University Avenue, Toronto, Ontario, M5J 2H7.
- B. I have received the following degree in Geological Sciences:
B.Sc. (Hons.) 1965 – University of New England, Armidale, NSW, Australia
- C. I am a Professional Geologist in the Province of Ontario. I am also:
A Member of the Canadian Institute of Mining, Metallurgy and Petroleum (CIM)
A Member of the Prospectors and Developers Association of Canada (PDAC)
A Fellow of the Society of Economic geologists (SEG)
- D. My relevant experience for the purposes of this report are:
- Qualifying Report for Craibbe-Fletcher Gold Mines Ltd.
 - Qualifying Report for Lassie Red Lake Gold Mines Limited
 - Mineral resource and mineral reserve audit of Bajo de la Alumbrera, Argentina.
 - Report on the Madsen Property for Madsen Gold Corp.
 - Examination of El Pachon copper deposit, Argentina.
 - Mineral Resource and Mineral Reserve Statement for the Homestake Mine, Lead S.D. for Homestake Mining Company
 - Mineral Resource Estimate, Dome Mine, Timmins, Ontario
- E. I have been practicing as a professional geologist for more than 30 years.
- F. I have contributed to all of the sections of this Report.
- G. I am not aware of any material fact or material change with respect to the subject matter of this report, which is not reflected in “the Report”, the omission to disclose which would make this report misleading.
- H. I am independent of the Issuer applying the tests set out in Section 1.5 of National Instrument 43-101.
- I. I have read National Instrument 43-101 and Form 43-101F1, and this report has been prepared in compliance with National Instrument 43-101 and Form 43-101F1.

WINTERBOURNE EXPLORATIONS LTD.

- J. I consent to the filing of the Technical Report with any stock exchange and other regulatory authority and any publication by them for regulatory purposes, including electronic publication I the public company files on their websites accessible by the public of the Technical Report.

(signed and sealed)

Dated at Toronto, Ontario
October 10, 2005

Neil N. Gow, B.Sc.(Hons.), P.Geo.
Consulting Geologist

APPENDIX 1

**LIST OF WHOLLY-OWNED CLAIMS OF WESTERN TROY
CAPITAL RESOURCES INC. AND CLAIMS HELD UNDER
JOINT VENTURE WITH MATCH CAPITAL RESOURCES
CORP.**

WESTERN TROY LISTING OF CLAIMS

AS AT SEPTEMBER 8, 2005

PROPERTY	CLAIM	TOWNSHIP	EXPIRY DATE	RECORD NAME
MACLEOD	5249879	33 A/02	8-Jul-06	WESTERN TROY
MACLEOD	5249880	33 A/02	8-Jul-06	WESTERN TROY
MACLEOD	5249881	33 A/02	8-Jul-06	WESTERN TROY
MACLEOD	5249882	33 A/02	8-Jul-06	WESTERN TROY
MACLEOD	5249883	33 A/02	8-Jul-06	WESTERN TROY
MACLEOD	5249884	33 A/02	8-Jul-06	WESTERN TROY
MACLEOD	5249885	33 A/02	8-Jul-06	WESTERN TROY
MACLEOD	5249886	33 A/02	8-Jul-06	WESTERN TROY
MACLEOD	5249887	33 A/02	8-Jul-06	WESTERN TROY
MACLEOD	5249888	33 A/02	8-Jul-06	WESTERN TROY
MACLEOD	5249889	33 A/02	8-Jul-06	WESTERN TROY
MACLEOD	5249890	33 A/02	8-Jul-06	WESTERN TROY
MACLEOD	5249891	33 A/02	8-Jul-06	WESTERN TROY
MACLEOD	5249892	33 A/02	8-Jul-06	WESTERN TROY
MACLEOD	5249893	33 A/02	8-Jul-06	WESTERN TROY
MACLEOD	5249894	33 A/02	8-Jul-06	WESTERN TROY
MACLEOD	5249895	33 A/02	8-Jul-06	WESTERN TROY
MACLEOD	5249896	33 A/02	8-Jul-06	WESTERN TROY
MACLEOD	5254169	33 A/07	8-Jul-06	WESTERN TROY
MACLEOD	5254170	33 A/07	8-Jul-06	WESTERN TROY
MACLEOD	5254171	33 A/07	8-Jul-06	WESTERN TROY
MACLEOD	5254172	33 A/02	8-Jul-06	WESTERN TROY
MACLEOD	5254173	33 A/02	8-Jul-06	WESTERN TROY
MACLEOD	5254174	33 A/02	8-Jul-06	WESTERN TROY
MACLEOD	5254175	33 A/02	8-Jul-06	WESTERN TROY
MACLEOD	5254176	33 A/02	8-Jul-06	WESTERN TROY
MACLEOD	5254177	33 A/02	8-Jul-06	WESTERN TROY
MACLEOD	5254178	33 A/02	8-Jul-06	WESTERN TROY
MACLEOD	5254179	33 A/02	8-Jul-06	WESTERN TROY
MACLEOD	5254180	33 A/02	8-Jul-06	WESTERN TROY
MACLEOD	5254181	33 A/02	8-Jul-06	WESTERN TROY
MACLEOD	5254182	33 A/02	8-Jul-06	WESTERN TROY
MACLEOD	5254183	33 A/02	8-Jul-06	WESTERN TROY
MACLEOD	5254184	33 A/02	8-Jul-06	WESTERN TROY
MACLEOD	5254185	33 A/02	8-Jul-06	WESTERN TROY
MACLEOD	5254186	33 A/02	8-Jul-06	WESTERN TROY
MACLEOD	5254187	33 A/02	8-Jul-06	WESTERN TROY
MACLEOD	5254188	33 A/02	8-Jul-06	WESTERN TROY
TOTAL:	38			
MAGRILL	M0014872	33 A/02	11-Mar-06	WESTERN TROY
MAGRILL	M0014873	33 A/02	11-Mar-06	WESTERN TROY
MAGRILL	M0014874	33 A/02	11-Mar-06	WESTERN TROY
MAGRILL	M0014875	33 A/02	11-Mar-06	WESTERN TROY

MAGRILL	M0014876	33 A/02	11-Mar-06	WESTERN TROY
MAGRILL	M0014877	33 A/02	11-Mar-06	WESTERN TROY
MAGRILL	M0014878	33 A/02	11-Mar-06	WESTERN TROY
MAGRILL	M0014879	33 A/02	11-Mar-06	WESTERN TROY
MAGRILL	M0014880	33 A/02	11-Mar-06	WESTERN TROY
MAGRILL	M0014881	33 A/02	11-Mar-06	WESTERN TROY
MAGRILL	M0014882	33 A/02	11-Mar-06	WESTERN TROY
MAGRILL	M0014883	33 A/02	11-Mar-06	WESTERN TROY
MAGRILL	M0014884	33 A/02	11-Mar-06	WESTERN TROY
MAGRILL	M0014885	33 A/02	11-Mar-06	WESTERN TROY
MAGRILL	M0014886	33 A/02	11-Mar-06	WESTERN TROY
MAGRILL	M0014887	33 A/02	11-Mar-06	WESTERN TROY
MAGRILL	M0014888	33 A/02	11-Mar-06	WESTERN TROY
MAGRILL	M0014889	33 A/02	11-Mar-06	WESTERN TROY

TOTAL:	18			
--------	----	--	--	--

MATCH	M0024996	33 A/07	20-Jun-06	MATCH CAPITAL
MATCH	M0024997	33 A/07	20-Jun-06	MATCH CAPITAL
MATCH	M0024998	33 A/07	20-Jun-06	MATCH CAPITAL
MATCH	M0024999	33 A/07	20-Jun-06	MATCH CAPITAL
MATCH	M0025000	33 A/07	20-Jun-06	MATCH CAPITAL
MATCH	M0025001	33 A/07	20-Jun-06	MATCH CAPITAL
MATCH	M0025002	33 A/07	20-Jun-06	MATCH CAPITAL
MATCH	M0025003	33 A/07	20-Jun-06	MATCH CAPITAL
MATCH	M0025004	33 A/07	20-Jun-06	MATCH CAPITAL
MATCH	M0025005	33 A/07	20-Jun-06	MATCH CAPITAL
MATCH	M0025006	33 A/07	20-Jun-06	MATCH CAPITAL
MATCH	M0025007	33 A/07	20-Jun-06	MATCH CAPITAL
MATCH	M0025008	33 A/07	20-Jun-06	MATCH CAPITAL
MATCH	M0025009	33 A/07	20-Jun-06	MATCH CAPITAL
MATCH	M0025010	33 A/07	20-Jun-06	MATCH CAPITAL
MATCH	M0025011	33 A/07	20-Jun-06	MATCH CAPITAL
MATCH	M0025012	33 A/07	20-Jun-06	MATCH CAPITAL
MATCH	M0025013	33 A/07	20-Jun-06	MATCH CAPITAL
MATCH	M0025014	33 A/07	20-Jun-06	MATCH CAPITAL
MATCH	M0025015	33 A/07	20-Jun-06	MATCH CAPITAL
MATCH	M0025016	33 A/07	20-Jun-06	MATCH CAPITAL
MATCH	M0025017	33 A/07	20-Jun-06	MATCH CAPITAL
MATCH	M0025018	33 A/07	20-Jun-06	MATCH CAPITAL
MATCH	M0025019	33 A/07	20-Jun-06	MATCH CAPITAL
MATCH	M0025020	33 A/07	20-Jun-06	MATCH CAPITAL
MATCH	M0025021	33 A/07	20-Jun-06	MATCH CAPITAL
MATCH	M0025022	33 A/07	20-Jun-06	MATCH CAPITAL
MATCH	M0025023	33 A/07	20-Jun-06	MATCH CAPITAL
MATCH	M0025024	33 A/07	20-Jun-06	MATCH CAPITAL
MATCH	M0025025	33 A/07	20-Jun-06	MATCH CAPITAL
MATCH	M0025026	33 A/07	20-Jun-06	MATCH CAPITAL
MATCH	M0025027	33 A/07	20-Jun-06	MATCH CAPITAL
MATCH	M0025028	33 A/07	20-Jun-06	MATCH CAPITAL
MATCH	M0025029	33 A/07	20-Jun-06	MATCH CAPITAL

MATCH	M0025030	33 A/07	20-Jun-06	MATCH CAPITAL
MATCH	M0025031	33 A/07	20-Jun-06	MATCH CAPITAL
MATCH	M0025032	33 A/07	20-Jun-06	MATCH CAPITAL
MATCH	M0025033	33 A/07	20-Jun-06	MATCH CAPITAL
MATCH	M0025034	33 A/07	20-Jun-06	MATCH CAPITAL
MATCH	M0025035	33 A/07	20-Jun-06	MATCH CAPITAL
MATCH	M0025036	33 A/07	20-Jun-06	MATCH CAPITAL
MATCH	M0025037	33 A/07	20-Jun-06	MATCH CAPITAL
MATCH	M0025038	33 A/07	20-Jun-06	MATCH CAPITAL
MATCH	M0025039	33 A/07	20-Jun-06	MATCH CAPITAL
MATCH	M0025040	33 A/07	20-Jun-06	MATCH CAPITAL
MATCH	M0025041	33 A/07	20-Jun-06	MATCH CAPITAL
MATCH	M0025042	33 A/07	20-Jun-06	MATCH CAPITAL
MATCH	M0025043	33 A/07	20-Jun-06	MATCH CAPITAL
MATCH	M0025044	33 A/07	20-Jun-06	MATCH CAPITAL
MATCH	M0025045	33 A/07	20-Jun-06	MATCH CAPITAL
MATCH	M0025046	33 A/07	20-Jun-06	MATCH CAPITAL
MATCH	M0025047	33 A/07	20-Jun-06	MATCH CAPITAL
MATCH	M0025048	33 A/07	20-Jun-06	MATCH CAPITAL
MATCH	M0025049	33 A/07	20-Jun-06	MATCH CAPITAL
MATCH	M0025050	33 A/07	20-Jun-06	MATCH CAPITAL
MATCH	M0025051	33 A/07	20-Jun-06	MATCH CAPITAL
MATCH	M0025052	33 A/07	20-Jun-06	MATCH CAPITAL
MATCH	M0025053	33 A/07	20-Jun-06	MATCH CAPITAL
MATCH	M0025054	33 A/07	20-Jun-06	MATCH CAPITAL
MATCH	M0025055	33 A/07	20-Jun-06	MATCH CAPITAL
MATCH	M0025056	33 A/07	20-Jun-06	MATCH CAPITAL
MATCH	M0025057	33 A/07	20-Jun-06	MATCH CAPITAL
MATCH	M0025058	33 A/07	20-Jun-06	MATCH CAPITAL
MATCH	M0025059	33 A/07	20-Jun-06	MATCH CAPITAL
MATCH	M0025060	33 A/07	20-Jun-06	MATCH CAPITAL

TOTAL:	65			
--------	----	--	--	--

WINDY-1	4620371	33 A/03	14-Aug-06	WESTERN TROY
WINDY-1	4620372	33 A/03	14-Aug-06	WESTERN TROY
WINDY-1	4620373	33 A/03	14-Aug-06	WESTERN TROY
WINDY-1	4620374	33 A/03	14-Aug-06	WESTERN TROY
WINDY-1	4620375	33 A/03	15-Aug-06	WESTERN TROY
WINDY-1	4620381	33 A/03	15-Aug-06	WESTERN TROY
WINDY-1	4620382	33 A/03	15-Aug-06	WESTERN TROY
WINDY-1	4620383	33 A/03	15-Aug-06	WESTERN TROY
WINDY-1	4620384	33 A/03	15-Aug-06	WESTERN TROY
WINDY-1	4620385	33 A/03	15-Aug-06	WESTERN TROY
WINDY-1	4620391	33 A/03	16-Aug-06	WESTERN TROY
WINDY-1	4620392	33 A/03	16-Aug-06	WESTERN TROY
WINDY-1	4620393	33 A/03	16-Aug-06	WESTERN TROY
WINDY-1	4620394	33 A/03	16-Aug-06	WESTERN TROY
WINDY-1	4620395	33 A/03	16-Aug-06	WESTERN TROY
WINDY-1	4620401	33 A/03	16-Aug-06	WESTERN TROY
WINDY-1	4620402	33 A/03	17-Aug-06	WESTERN TROY

WINDY-1	4620403	33 A/03	17-Aug-06	WESTERN TROY
WINDY-1	4620404	33 A/03	17-Aug-06	WESTERN TROY
WINDY-1	4620405	33 A/03	17-Aug-06	WESTERN TROY
WINDY-1	4620411	33 A/03	19-Aug-06	WESTERN TROY
WINDY-1	4620412	33 A/03	19-Aug-06	WESTERN TROY
WINDY-1	4620413	33 A/03	19-Aug-06	WESTERN TROY
WINDY-1	4620414	33 A/03	20-Aug-06	WESTERN TROY
WINDY-1	4620431	33 A/03	14-Aug-06	WESTERN TROY
WINDY-1	4620432	33 A/03	14-Aug-06	WESTERN TROY
WINDY-1	4620433	33 A/03	14-Aug-06	WESTERN TROY
WINDY-1	4620434	33 A/03	14-Aug-06	WESTERN TROY
WINDY-1	4620435	33 A/03	14-Aug-06	WESTERN TROY
WINDY-1	4620441	33 A/03	15-Aug-06	WESTERN TROY
WINDY-1	4620442	33 A/03	15-Aug-06	WESTERN TROY
WINDY-1	4620443	33 A/03	15-Aug-06	WESTERN TROY
WINDY-1	4620444	33 A/03	15-Aug-06	WESTERN TROY
WINDY-1	4620445	33 A/03	15-Aug-06	WESTERN TROY
WINDY-1	4620451	33 A/03	15-Aug-06	WESTERN TROY
WINDY-1	4620452	33 A/03	16-Aug-06	WESTERN TROY
WINDY-1	4620453	33 A/03	16-Aug-06	WESTERN TROY
WINDY-1	4620454	33 A/03	16-Aug-06	WESTERN TROY
WINDY-1	4620455	33 A/03	16-Aug-06	WESTERN TROY
WINDY-1	4620461	33 A/03	16-Aug-06	WESTERN TROY
WINDY-1	4620462	33 A/03	16-Aug-06	WESTERN TROY
WINDY-1	4620463	33 A/03	17-Aug-06	WESTERN TROY
WINDY-1	4620464	33 A/03	17-Aug-06	WESTERN TROY
WINDY-1	4620465	33 A/03	17-Aug-06	WESTERN TROY
WINDY-1	4620471	33 A/03	17-Aug-06	WESTERN TROY
WINDY-1	4620472	33 A/03	17-Aug-06	WESTERN TROY
WINDY-1	4620473	33 A/03	17-Aug-06	WESTERN TROY
WINDY-1	4620474	33 A/03	18-Aug-06	WESTERN TROY
WINDY-1	4620475	33 A/03	18-Aug-06	WESTERN TROY
WINDY-1	4620481	33 A/03	18-Aug-06	WESTERN TROY
WINDY-1	4620482	33 A/03	18-Aug-06	WESTERN TROY
WINDY-1	4620483	33 A/03	18-Aug-06	WESTERN TROY
WINDY-1	4620484	33 A/03	19-Aug-06	WESTERN TROY
WINDY-1	4620485	33 A/03	19-Aug-06	WESTERN TROY
WINDY-1	5046359	33 A/06	23-Sep-06	WESTERN TROY
WINDY-1	5046360	33 A/06	23-Sep-06	WESTERN TROY
WINDY-1	5046361	33 A/06	23-Sep-06	WESTERN TROY
WINDY-1	5046362	33 A/06	23-Sep-06	WESTERN TROY
WINDY-1	5046363	33 A/06	23-Sep-06	WESTERN TROY
WINDY-1	5046364	33 A/06	23-Sep-06	WESTERN TROY
WINDY-1	5046365	33 A/06	23-Sep-06	WESTERN TROY
WINDY-1	5046366	33 A/06	23-Sep-06	WESTERN TROY
WINDY-1	5046367	33 A/06	23-Sep-06	WESTERN TROY
WINDY-1	5046368	33 A/06	23-Sep-06	WESTERN TROY
WINDY-1	5046369	33 A/06	23-Sep-06	WESTERN TROY
WINDY-1	5046370	33 A/03	23-Sep-06	WESTERN TROY
WINDY-1	5046371	33 A/03	23-Sep-06	WESTERN TROY
WINDY-1	5046372	33 A/03	23-Sep-06	WESTERN TROY

WINDY-1	5254487	33 A/07	2-Dec-06	WESTERN TROY
WINDY-1	5254488	33 A/07	2-Dec-06	WESTERN TROY
WINDY-1	5254489	33 A/07	2-Dec-06	WESTERN TROY
WINDY-1	5254490	33 A/07	2-Dec-06	WESTERN TROY
WINDY-1	5254491	33 A/07	2-Dec-06	WESTERN TROY
WINDY-1	5254492	33 A/07	2-Dec-06	WESTERN TROY

TOTAL:	278			
---------------	------------	--	--	--

WINDY-2	5202332	33 A/07	8-Feb-06	WESTERN TROY
WINDY-2	5202340	33 A/07	8-Feb-06	WESTERN TROY
WINDY-2	5202341	33 A/07	8-Feb-06	WESTERN TROY
WINDY-2	5202342	33 A/07	8-Feb-06	WESTERN TROY
WINDY-2	5202348	33 A/07	8-Feb-06	WESTERN TROY
WINDY-2	5202349	33 A/07	8-Feb-06	WESTERN TROY
WINDY-2	5202350	33 A/07	8-Feb-06	WESTERN TROY
WINDY-2	5202351	33 A/07	8-Feb-06	WESTERN TROY
WINDY-2	5202352	33 A/07	8-Feb-06	WESTERN TROY
WINDY-2	5202353	33 A/07	8-Feb-06	WESTERN TROY
WINDY-2	5202354	33 A/07	8-Feb-06	WESTERN TROY
WINDY-2	5202364	33 A/07	8-Feb-06	WESTERN TROY
WINDY-2	5202365	33 A/07	8-Feb-06	WESTERN TROY
WINDY-2	5202366	33 A/07	8-Feb-06	WESTERN TROY
WINDY-2	5202367	33 A/07	8-Feb-06	WESTERN TROY
WINDY-2	5202368	33 A/07	8-Feb-06	WESTERN TROY
WINDY-2	5202369	33 A/07	8-Feb-06	WESTERN TROY
WINDY-2	5202370	33 A/07	8-Feb-06	WESTERN TROY
WINDY-2	5202371	33 A/07	8-Feb-06	WESTERN TROY
WINDY-2	5202372	33 A/07	8-Feb-06	WESTERN TROY
WINDY-2	5202373	33 A/07	8-Feb-06	WESTERN TROY
WINDY-2	5202374	33 A/07	8-Feb-06	WESTERN TROY
WINDY-2	5202375	33 A/07	8-Feb-06	WESTERN TROY
WINDY-2	5202376	33 A/07	8-Feb-06	WESTERN TROY
WINDY-2	5202377	33 A/07	8-Feb-06	WESTERN TROY
WINDY-2	5202378	33 A/07	8-Feb-06	WESTERN TROY
WINDY-2	5202379	33 A/07	8-Feb-06	WESTERN TROY
WINDY-2	5202380	33 A/07	8-Feb-06	WESTERN TROY
WINDY-2	5202381	33 A/07	8-Feb-06	WESTERN TROY
WINDY-2	5202386	33 A/07	8-Feb-06	WESTERN TROY
WINDY-2	5202387	33 A/07	8-Feb-06	WESTERN TROY
WINDY-2	5202388	33 A/07	8-Feb-06	WESTERN TROY
WINDY-2	5202389	33 A/07	8-Feb-06	WESTERN TROY
WINDY-2	5202390	33 A/07	8-Feb-06	WESTERN TROY
WINDY-2	5202391	33 A/07	8-Feb-06	WESTERN TROY
WINDY-2	5202392	33 A/07	8-Feb-06	WESTERN TROY
WINDY-2	5202393	33 A/07	8-Feb-06	WESTERN TROY
WINDY-2	5202394	33 A/07	8-Feb-06	WESTERN TROY
WINDY-2	5202395	33 A/07	8-Feb-06	WESTERN TROY
WINDY-2	5202400	33 A/07	8-Feb-06	WESTERN TROY
WINDY-2	5202401	33 A/07	8-Feb-06	WESTERN TROY
WINDY-2	5202402	33 A/07	8-Feb-06	WESTERN TROY

WINDY-2	5202403	33 A/07	8-Feb-06	WESTERN TROY
WINDY-2	5202404	33 A/07	8-Feb-06	WESTERN TROY

TOTAL: 44

WINDY-5	M1081253	33 A/03	5-May-06	WESTERN TROY
WINDY-5	M1081254	33 A/03	5-May-06	WESTERN TROY

TOTAL: 2

WINDY-6	M1050038	33 A/02	16-Feb-06	WESTERN TROY
WINDY-6	M1050039	33 A/02	16-Feb-06	WESTERN TROY
WINDY-6	M1050040	33 A/02	16-Feb-06	WESTERN TROY
WINDY-6	M1050041	33 A/02	16-Feb-06	WESTERN TROY
WINDY-6	M1050042	33 A/02	16-Feb-06	WESTERN TROY
WINDY-6	M1050043	33 A/02	16-Feb-06	WESTERN TROY
WINDY-6	M1050044	33 A/02	16-Feb-06	WESTERN TROY
WINDY-6	M1050045	33 A/02	16-Feb-06	WESTERN TROY
WINDY-6	M1050046	33 A/02	16-Feb-06	WESTERN TROY
WINDY-6	M1050047	33 A/02	16-Feb-06	WESTERN TROY
WINDY-6	M1050048	33 A/02	16-Feb-06	WESTERN TROY
WINDY-6	M1050049	33 A/02	16-Feb-06	WESTERN TROY
WINDY-6	M1050050	33 A/02	16-Feb-06	WESTERN TROY
WINDY-6	M1050051	33 A/02	16-Feb-06	WESTERN TROY
WINDY-6	M1050052	33 A/02	16-Feb-06	WESTERN TROY
WINDY-6	M1050053	33 A/02	16-Feb-06	WESTERN TROY
WINDY-6	M1050054	33 A/02	16-Feb-06	WESTERN TROY
WINDY-6	M1050055	33 A/02	16-Feb-06	WESTERN TROY
WINDY-6	M1050056	33 A/02	16-Feb-06	WESTERN TROY
WINDY-6	M1050057	33 A/02	16-Feb-06	WESTERN TROY
WINDY-6	M1050058	33 A/02	16-Feb-06	WESTERN TROY
WINDY-6	M1050059	33 A/02	16-Feb-06	WESTERN TROY
WINDY-6	M1050060	33 A/02	16-Feb-06	WESTERN TROY
WINDY-6	M1050061	33 A/02	16-Feb-06	WESTERN TROY
WINDY-6	M1050062	33 A/02	16-Feb-06	WESTERN TROY
WINDY-6	M1050063	33 A/02	16-Feb-06	WESTERN TROY
WINDY-6	M1050064	33 A/02	16-Feb-06	WESTERN TROY
WINDY-6	M1081255	33 A/03	5-May-06	WESTERN TROY

TOTAL: 28

GRAND TOTAL: 473

APPENDIX 2

FIGURES

- FIGURE 1 GENERAL LOCATION MAP**
- FIGURE 2 CLAIM LOCATION MAP**
- FIGURE 3 REGIONAL GEOLOGY MAP**
- FIGURE 4 PROPERTY GEOLOGY MAP**
- FIGURE 5 GEOLOGY AND DRILLING, MAIN ZONE**
- FIGURE 6 SECTION 1125E (LOOKING SOUTHWEST), MAIN ZONE**
- FIGURE 7 GEOLOGY AND DRILLING, SOUTH ZONE**
- FIGURE 8 I.P. ANOMALIES AND DRILL HOLE LOCATIONS, NORTHEAST AREA**



October 2005

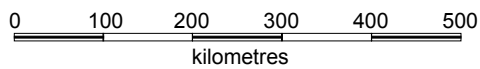


Figure 1
 Western Troy Capital Resources Inc.
 MacLeod Lake Property
 Québec
General Location Map

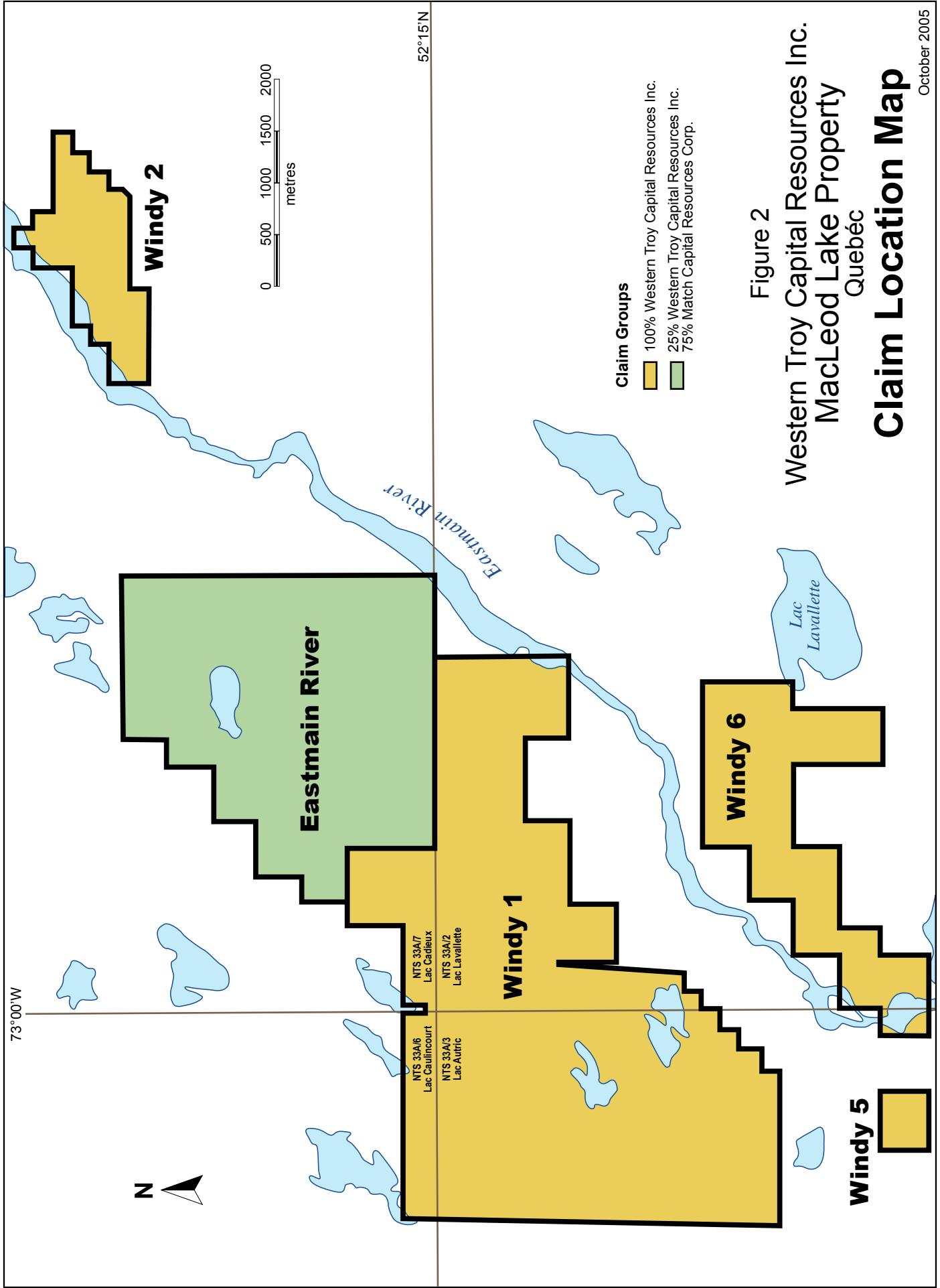


Figure 2

Western Troy Capital Resources Inc.
 MacLeod Lake Property
 Québec

Claim Location Map

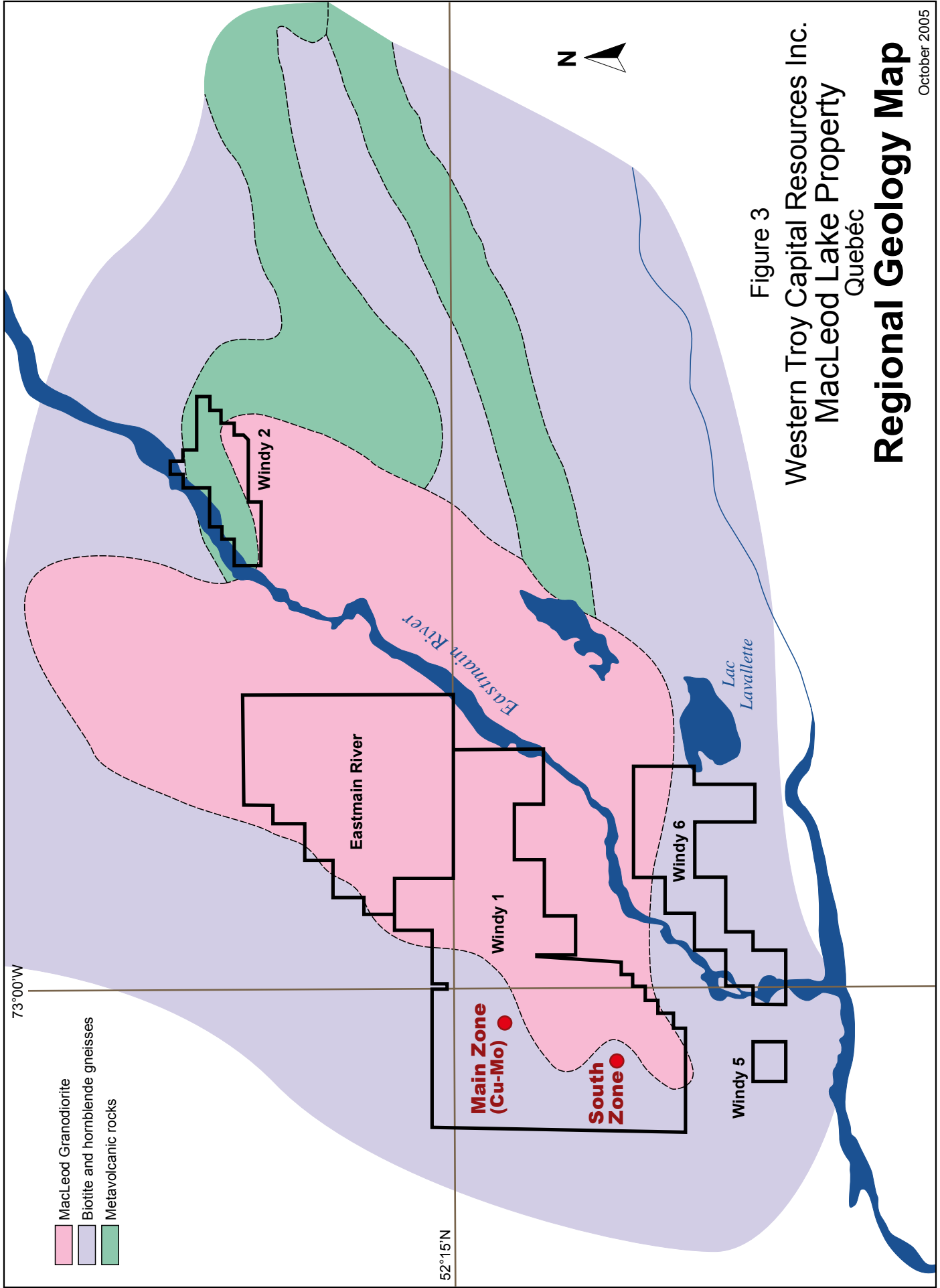
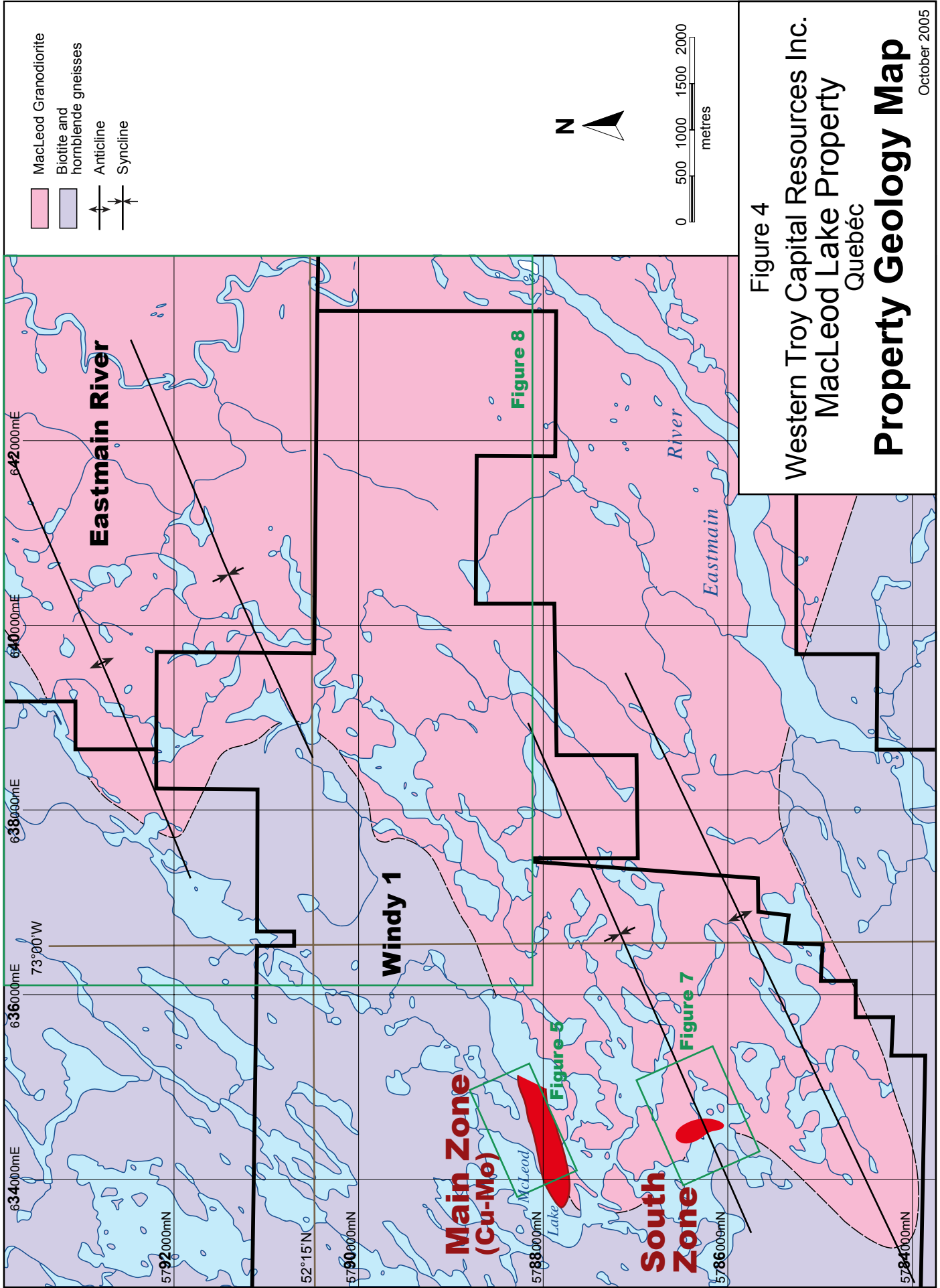


Figure 3
 Western Troy Capital Resources Inc.
 MacLeod Lake Property
 Québec
Regional Geology Map



- MacLeod Granodiorite
- Biotite and hornblende gneisses
- Anticline
- Syncline

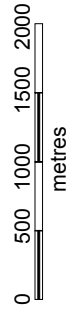
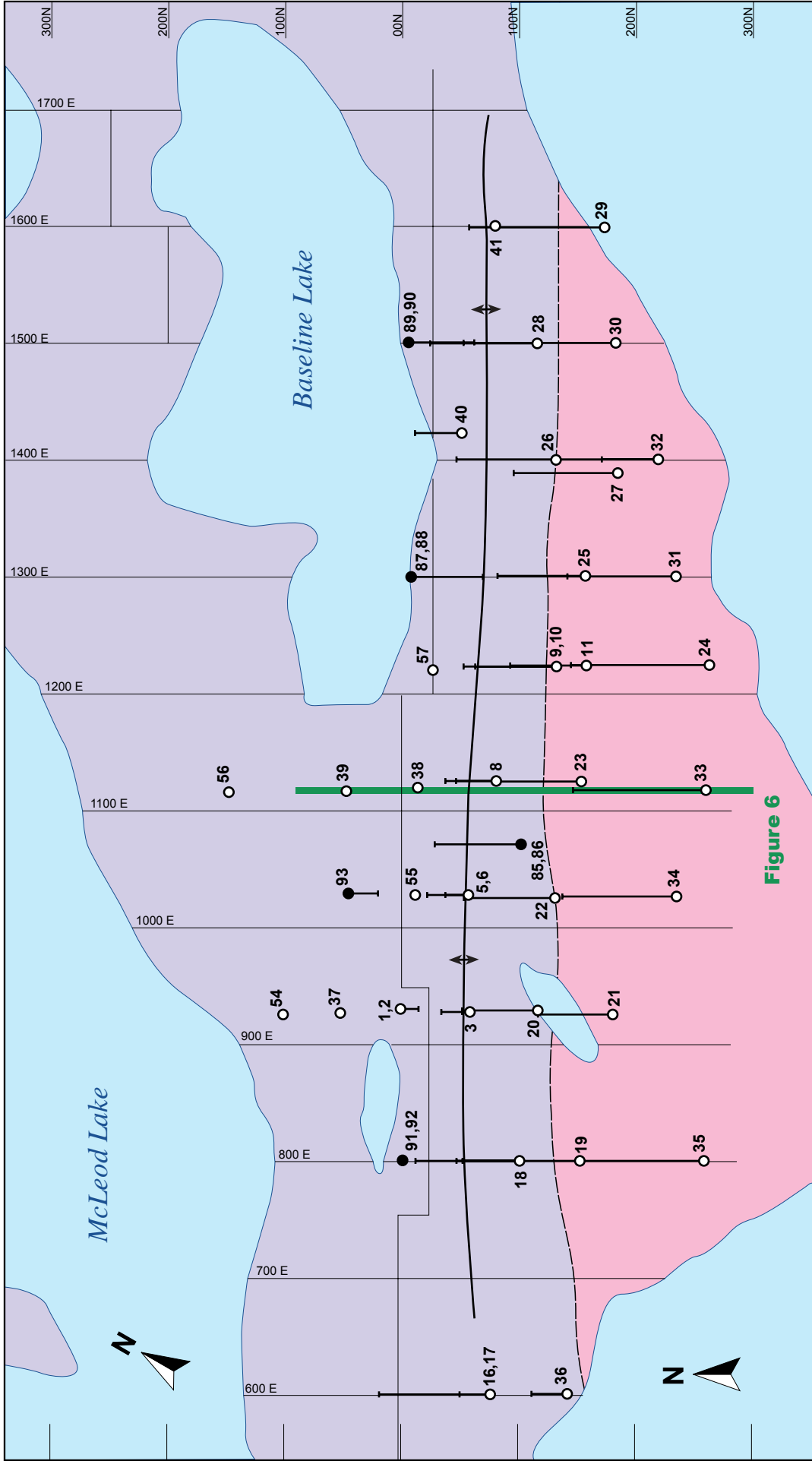


Figure 4

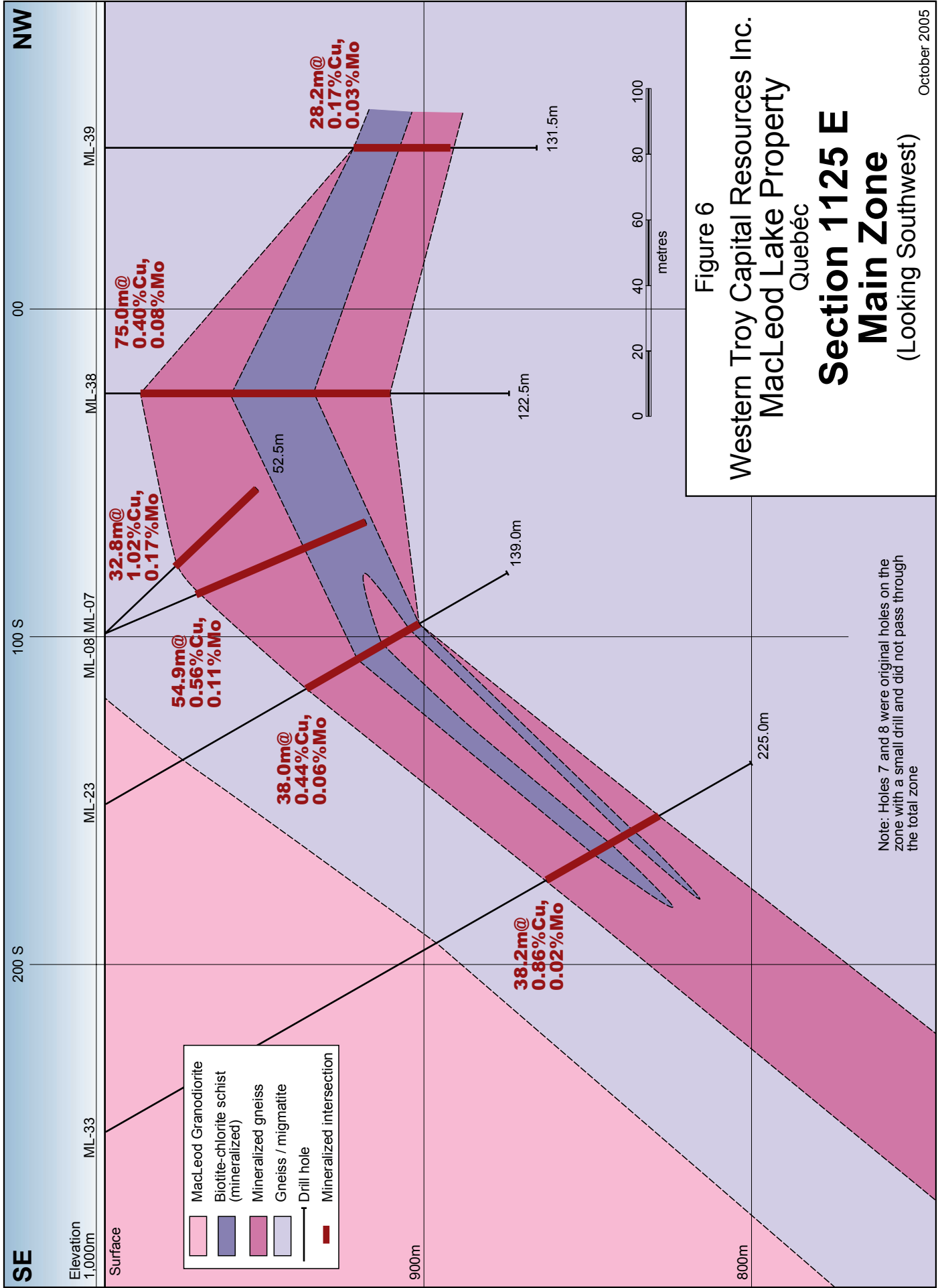
Western Troy Capital Resources Inc.
 MacLeod Lake Property
 Québec
Property Geology Map



- MacLeod Granodiorite
- Biotite and hornblende gneisses
- Anticline
- 2005 drill hole and number
- Previous drill hole and number

Figure 6

Figure 5
 Western Troy Capital Resources Inc.
 MacLeod Lake Property
 Québec
Geology and Drilling
Main Zone



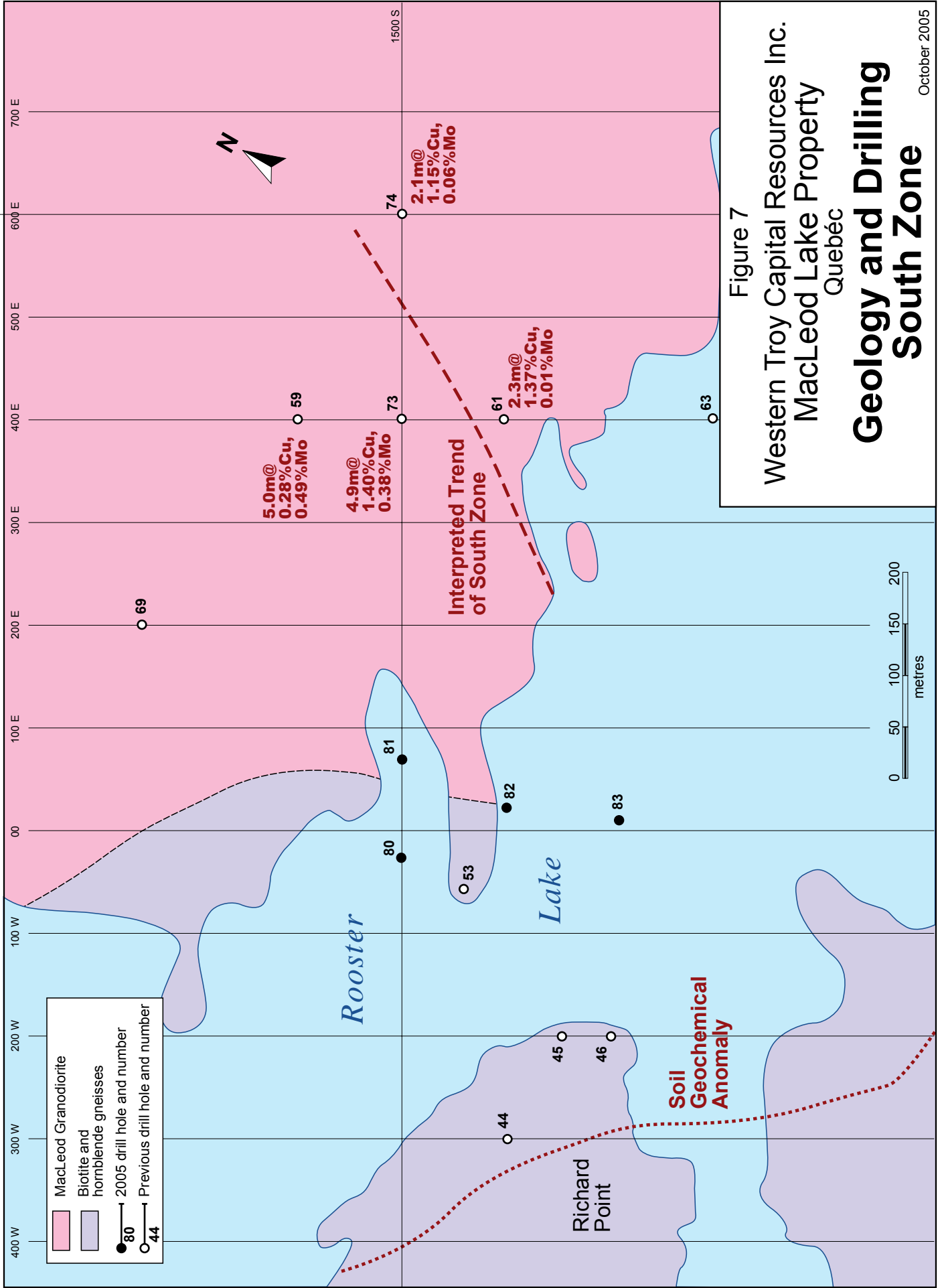
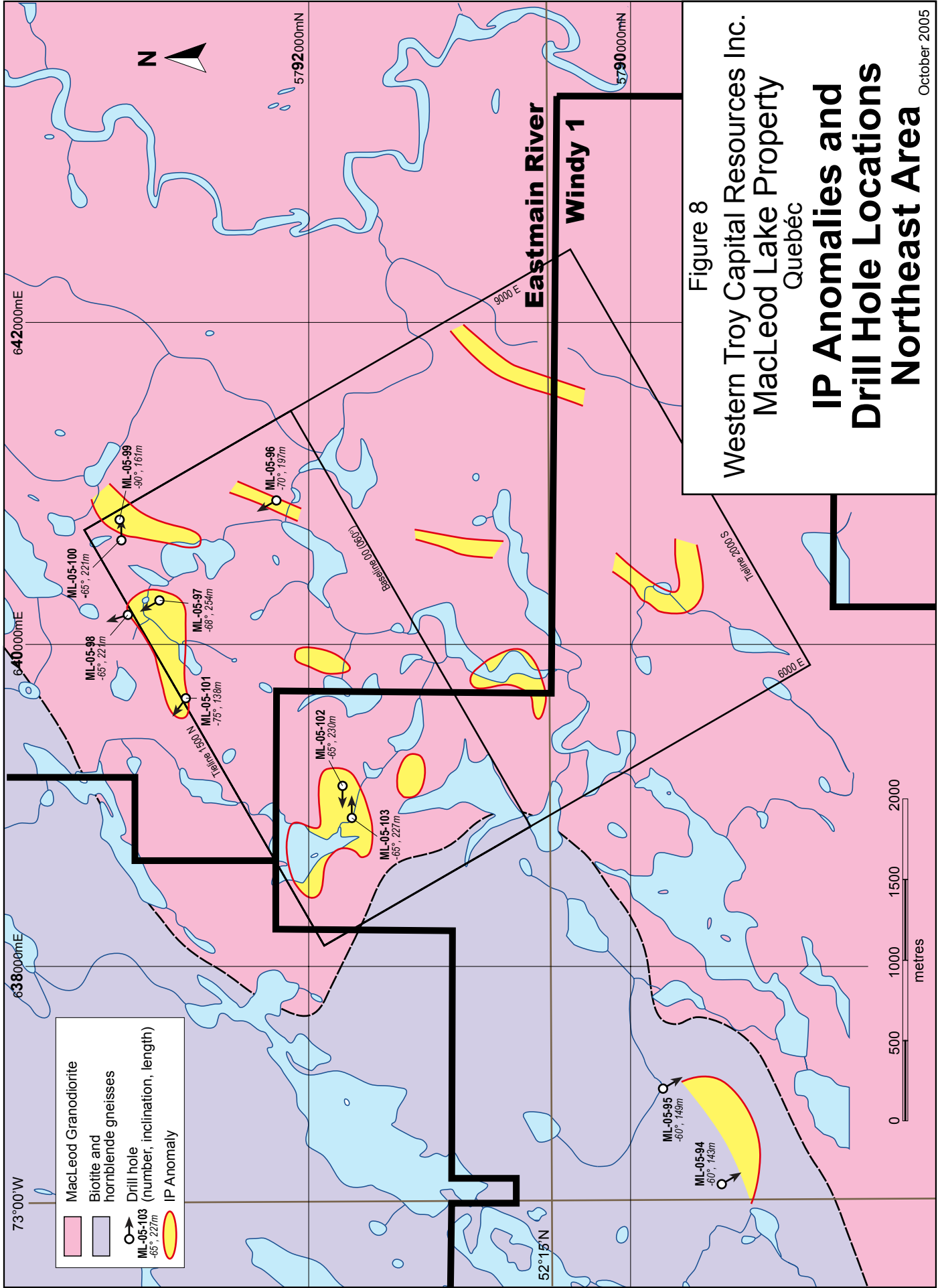


Figure 7

Western Troy Capital Resources Inc.
 MacLeod Lake Property
 Québec

Geology and Drilling South Zone

October 2005



73°00'W

638000mE

640000mE

642000mE

5790000mN

57920000mN

52°15'N

8000 E

9000 E

Baseline 00

Tekna 2005

Tekna 1900 N

ML-05-103
-65°, 227m

ML-05-102
-68°, 230m

ML-05-101
-75°, 138m

ML-05-98
-65°, 227m

ML-05-97
-68°, 234m

ML-05-100
-65°, 227m

ML-05-99
-90°, 161m

ML-05-96
-70°, 197m

ML-05-95
-50°, 143m

ML-05-94
-50°, 143m

MacLeod Granodiorite

Biotite and hornblende gneisses

Drill hole

ML-05-103 (number, inclination, length)

IP Anomaly

Figure 8

Western Troy Capital Resources Inc.
MacLeod Lake Property
Québec

IP Anomalies and Drill Hole Locations Northeast Area

October 2005

